

sumUp for Jira Cloud Release Notes 1.4.27-AC

Release date	10 Apr 2024
Release type	<div>FEATURES</div> <div>IMPROVEMENTS</div>
Highlights	Feature release



New feature

Finally, drill down on dates right on your Jira dashboards!

Introducing **extended date field support** for our [Two Dimensional Filter Statistics](#) and [Grouped Filter Results](#) gadgets: Slice and dice your data with date fields. Whether you're craving a daily dose of data, a weekly wrap-up, a quarterly Q&A, or a yearly yield, you can adjust your gadget view to suit your needs:

Marketing Campaign Cost analysis				
Customized	01/Jan/23-31/Dec/23	shown	Quarterly	
End Date	Budget	Costs	Issues	
Q1/23	2,700	2,500	2	
Q2/23	2,200	2,100	2	
Q3/23	3,100	3,100	3	
Q4/23	8,500	9,300	3	
Σ	16,500	17,000	10	

Adjust the time period and the shown aggregation level of the data directly in the gadget!

01/Jan/24-30/Apr/24

< April 2024 >

SUN	MON	TUE	WED	THU	FRI	SAT
31	1	2	3	4	5	6
7	8	9	10	11	12	13
14	15	16	17	18	19	20
21	22	23	24	25	26	27
28	29	30	1	2	3	4
5	6	7	8	9	10	11

shown

Quarterly

☐ Daily

☐ Weekly

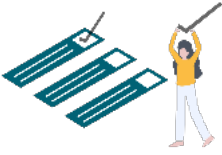
☐ Monthly

☒ Quarterly

☐ Yearly

Curious to see more? Take a look at our recently launched [Use Case Library](#).

Improvements



- Complete UI rework for our [Two Dimensional Filter Statistics](#) and [Grouped Filter Results](#) gadgets
- Improved labeling and layout for all gadgets

Bug fix



- The **Team** field was not handled correctly