

Space shuttle

SINCE VERSION 2.0.0, Space shuttle simplifies the navigation between **spaces** in Confluence.

The app creates a new **drop down menu** in the Confluence header which will be used as a shortcut to individual spaces or external links.

Once set up, the Space shuttle is visible for **every user in Confluence**.

The spaces can be divided into **categories** and **sub-categories**



The Space shuttle can be used by every Confluence user. Only spaces the user has access to will be shown.

When Space shuttle is activated, but no categories are defined, the menu is not displayed.

Set a custom menu title

You can set up your own custom menu title by following the steps below:

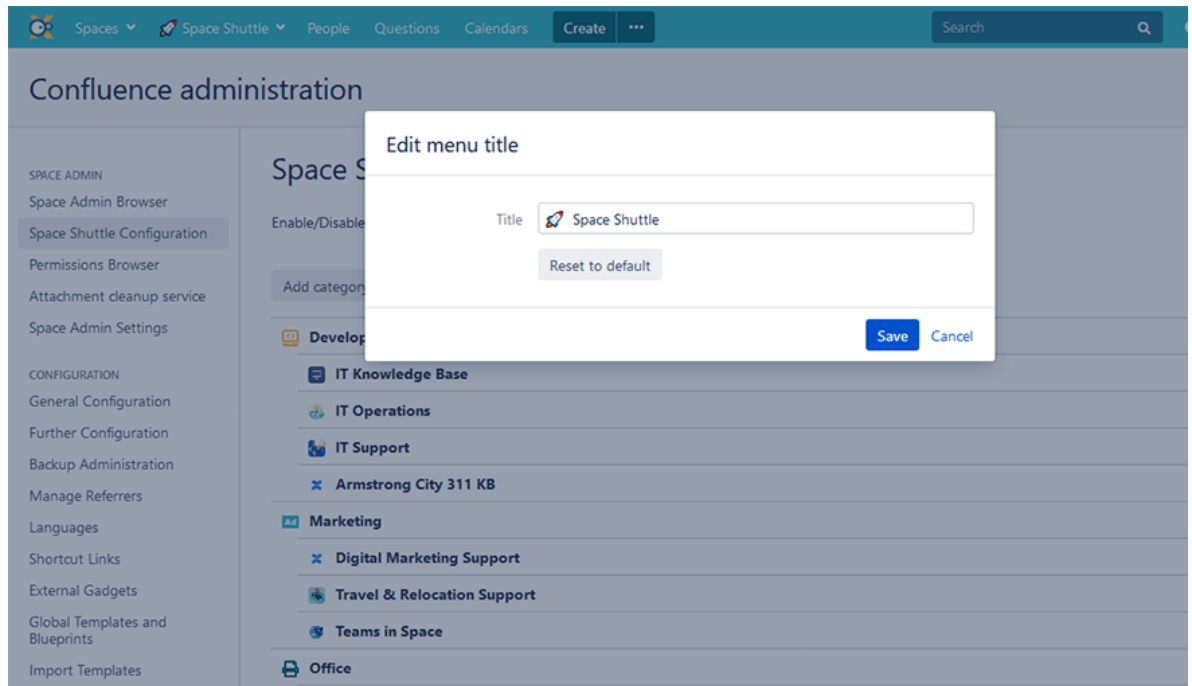
1

Head over to **Confluence administration** **Space shuttle configuration** and click on **edit menu title**

A screenshot of the Confluence administration interface. The top header bar is teal and contains navigation items: 'Spaces', 'Space Shuttle' (highlighted with a yellow border), 'People', 'Questions', 'Calendars', 'Create', and a three-dot menu. Below the header, the main content area is titled 'Confluence administration'. On the left, a sidebar lists various administration options, with 'Space Shuttle Configuration' highlighted by a yellow box. The main content area is titled 'Space Shuttle Configuration' and features a toggle switch for 'Enable/Disable Space Shuttle' which is turned on. Below this, there are buttons for 'Add category', 'Add spaces', 'Add link', and 'Expand / Collapse categories'. The configuration area is divided into sections: 'Development' (with sub-items like 'IT Knowledge Base', 'IT Operations', 'IT Support', and 'Armstrong City 311 KB'), 'Marketing' (with 'Digital Marketing Support' and 'Travel & Relocation Support'), and 'Teams in Space'. At the bottom, there is an 'Office' section. On the right side of the interface, a 'CONFLUENCE ADMINISTRATION' sidebar is visible, listing 'General configuration' (highlighted), 'User management', and 'Manage apps'.

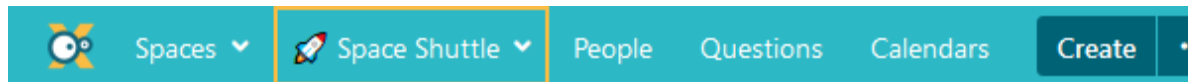
2

In the popup window, give your menu a title and click on **save**.



3

Your menu will be displayed in your Confluence header:



Configuration

For the configuration of Space shuttle, administrator permissions are needed.

Space shuttle can be set up in the **Confluence administration Space shuttle configuration**.

Confluence administration

SPACE ADMIN

Space Admin Browser

Permissions Browser

Space Admin Settings

Attachments Service

Space Shuttle Configuration

CONFIGURATION

General Configuration

Further Configuration

Space Shuttle Configuration

Enable/Disable Space Shuttle ☒

 Edit menu link

Add category


Add spaces

Add link

Expand / Collapse categories

Useful links

 [Marketplace Listing](#)

 [Documentation](#)

 [Support](#)

Custom icons

To make your navigation as easy and eye pleasing as possible, you can set up custom icons for categories and links.

Edit category

Name*

Custom icon No file chosen

Categories

1

To create a category, head over to **Confluence administration** **Space shuttle configuration** and click on **add category**

Space Shuttle Configuration

Enable/Disable Space Shuttle



Add category

Add spaces

Add link

Expand / Collapse category

2

The category will now be shown in the list.

Hovering over a category displays options to **rename**, **remove** it, and **add spaces** to it.

Space Shuttle Configuration

Enable/Disable Space Shuttle



 Edit

Add category

Add spaces

Add link

Expand / Collapse categories

 Customers

Edit Add category Add spaces

 Useful links

Removing a category will automatically remove all containing elements (spaces, links).

Spaces

Spaces can be added to the Space shuttle by clicking the **add spaces to space shuttle** button.

Space Shuttle Configuration

Enable/Disable Space Admin Navigation



Expand / Collapse categories

Add

Add spaces to Space Shuttle

Projects	Projects
Knowledge Base	
Intranet	
Customer	Rename Add spaces Remove

If a category exists and you want to add spaces, click the **add spaces** button when hovering over the category row.

Links

SINCE VERSION 2.1.0, links can be added by clicking the **add links to Space shuttle** button, where you specify the link text and URL.

Links are opened in a new browser tab and are always visible, even for anonymous users.

Permissions

SINCE VERSION 2.3.0, it is possible to add **permissions to links and categories**. Permissions can be set for **Confluence groups**.

If nothing is specified, the link/category is accessible to any user (even not logged in users).



Add link

Display text*

URL*

Visibility

Choose groups that should be able to see this entry in the Space Shuttle. Leave empty to not apply any restrictions.

Icon No file selected.

[Save](#) [Cancel](#)

Sorting

In the configuration view, the Space shuttle elements (categories, spaces, links) can be sorted and reordered through drag & drop.


This makes navigation configuration easy and straightforward.

Space Shuttle Configuration

Enable/Disable Space Shuttle ☒


 [Edit menu link](#)

[Add category](#) [Add spaces](#) [Add link](#) [Expand / Collapse categories](#)


 **Apps**

 **Customers**  Customers

 **Customers**

 **Useful links**

[Edit](#) [Add category](#) [Add spaces](#) [Remove](#)

 **xApps by Decadis**

To save time and get things done quickly, check the following [page](#) for helpful shortcuts.

If you still have questions, feel free to refer to our [support](#) team.