

# Get started

## More than just workflows

Jira Workflow Toolbox, or **JWT**, is the **best-rated Jira app** and your all-in-one toolbox for limitless workflow customization, process automation and live data display.

Enjoy an unparalleled user experience while implementing and automating your day-to-day processes - from reporting for the financial department and meeting the most complex governance needs, to simply saving a ton of time and reducing human error through automation - you only need one app, JWT.

Jira Workflow Toolbox, as the name suggests, started as a pure workflow app. Today, it's an all-in-one solution with three main pillars, that you normally have to buy individual apps for:

- **Workflows** - the largest collection of built-in workflow extensions on the market
- **Automation** - a highly flexible, event-based automation engine to break the workflow chains
- **Calculated fields** - three built-in custom field types to calculate and display issue and project data in real-time

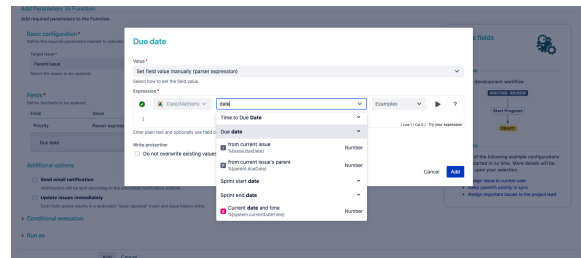
Each feature is built on an easy-to-use user interface that guides the admin through the configuration steps. Built-in examples and an extensive in-app handbook provide the right level of guidance, just when you might need it.

## Highlights

### Expression parser & field codes

JWT ships with a **powerful expression parser** providing hundreds of built-in **parser functions**. Instead of writing and maintaining scripts, use easy to read and well-documented functions like `subtasks()` or `count()` and robust field codes make accessing and processing any issue data a breeze.

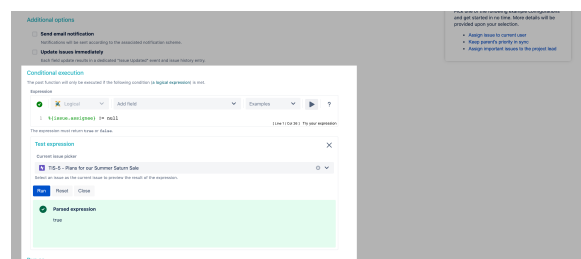
- **Easily access all issue data** - every issue field is just a click in a dropdown menu away.
- **Access even more data** - field codes and parser functions let you retrieve essential data which is not directly accessible through the UI - from historic field values to the number of linked issues.
- **Change happens, be prepared** - the JWT field codes make **fields**, and your expressions, **immune to field name updates**.



### All control in a single place - the expression editor

The **JWT expression editor** is your control center for managing JWT expressions. It detects what you want to achieve, from setting values to configuring complex conditional executions, and lets you test your expressions in a central location.

- **Pick the right field** - depending on what you are configuring, JWT injects the right field code at the right time into your expression.
- **Live testing** - validate your expression against any issue and preview the output in real-time.
- **Get help when you need it** - explore all available parser functions, and use the **in-app handbook** to copy and paste or mark them as favorites.
- **Be a parser hero** - use the **auto-complete** function to speed up composing your expressions.



## Turn ideas into workflows

JWT for Jira massively extends the native [workflow functionality](#) available in Jira by offering more than **50 custom conditions, validators and post functions**.

- **Control the availability of transitions** - use extremely powerful conditions and validators to enforce a predefined issue state before or while transitioning issues - from matching field values to a maximum number of linked issues.
- **Automate repetitive or manual tasks** - spend less time and increase consistency while creating, transitioning, and updating issues and issue fields with dedicated JWT post functions.
- **Increase flexibility while reducing manual overhead** - meet advanced requirements using **conditional logic** in post functions to only automate certain actions if the timing is right.

## Rule-based automation in Jira

[JWT automation rules](#) unleash the real power of the **JWT expression parser**. The number of use cases for automatic recurring tasks are almost endless and so are the capabilities of automation rules.

- **Easy to set up** - setting up an automation rule is straightforward using the **built-in drag and drop visual editor**.
- **Define when and what** - choose from a big set of system **triggers** (e.g. a field is updated by a user), control the scope of the execution using conditions and **selectors** and define which **action** should be performed automatically.
- **Control beyond triggers** - you can **schedule rules** to run at a predefined interval or execute them manually with a single click.
- **Test and deploy** - easily deploy rules between instances with the **built-in export and import** functionality.

## Show live data in custom fields

JWT ships with three [custom field types](#) to **calculate field values, display live data**, or even **pull data from online service providers** such as Google.

- **Define the scope** - each custom field type, from number, to text or date-time fields, comes with a different set of options that let you define exactly what you want to see as a result.
- **Use the power of the expression** - the foundation of each field is a JWT parser expression where you can choose from **hundreds of built-in functions**.
- **Make it shine** - you can individually define how the result of the calculation should appear, from **different time formats to currency symbols**.

## JWT calendars

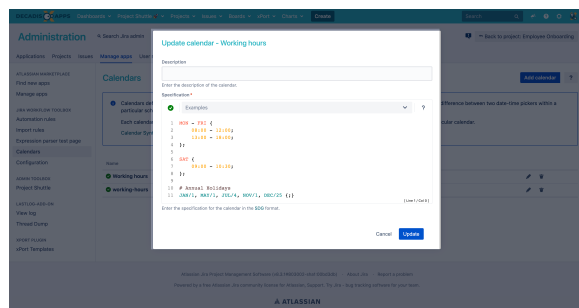
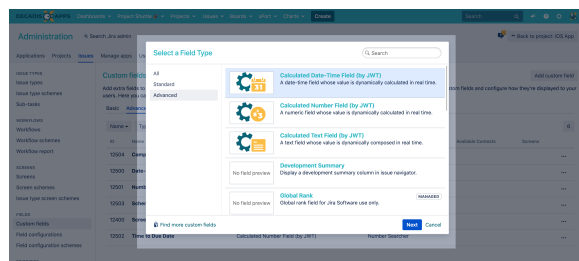
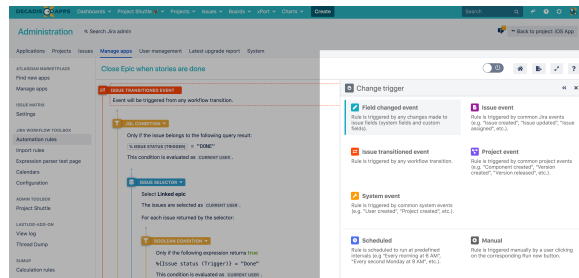
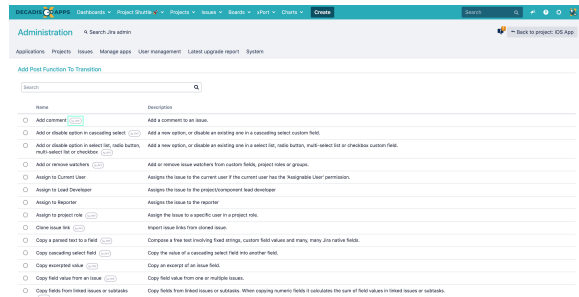
[JWT calendars](#) enable you to configure **highly flexible timeframes** to match your service level agreements, business hours and any other custom schedules relevant to your teams and processes.

- **Global configuration** - configure calendars globally and use them in parser functions for time validations and calculations.
- **Control the execution of actions** - use calendars in workflows and automation rules to control the execution of your automations.
- **Different teams, different data** - use calendars in calculated fields for displaying **context-dependent live data**.

## User- & project properties

JWT can utilize information stored as key-value-pairs in [user profiles](#) and [project descriptions](#). These properties can be used for multiple purposes, ranging from controlling transitions to composing project-specific, customized dynamic texts and setting default assignees in project roles.

- **Read and write** - you can both read and manipulate properties through JWT workflow post functions.



- [illegible]