

Get started

More than just workflows

Jira Workflow Toolbox, or **JWT**, is the **best-rated Jira app** and your all-in-one toolbox for limitless workflow customization, process automation and live data display.

Enjoy an unparalleled user experience while implementing and automating your day-to-day processes - from reporting for the financial department and meeting the most complex governance needs, to simply saving a ton of time and reducing human error through automation - you only need one app, JWT.

Jira Workflow Toolbox, as the name suggests, started as a pure workflow app. Today, it's an all-in-one solution with three main pillars, that you normally have to buy individual apps for:

- **Workflows** - the largest collection of built-in workflow extensions on the market
- **Automation** - a highly flexible, event-based automation engine to break the workflow chains
- **Calculated fields** - three built-in custom field types to calculate and display issue and project data in real-time

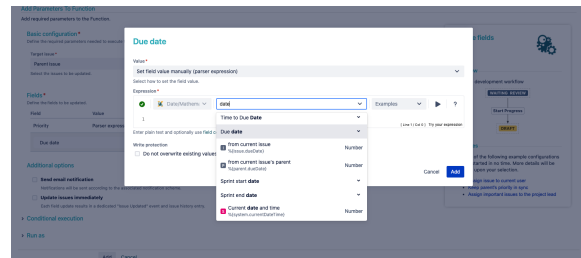
Each feature is built on an easy-to-use user interface that guides the admin through the configuration steps. Built-in examples and an extensive in-app handbook provide the right level of guidance, just when you might need it.

Highlights

Expression parser & field codes

JWT ships with a **powerful expression parser** providing hundreds of built-in **parser functions**. Instead of writing and maintaining scripts, use easy to read and well-documented functions like `subtasks()` or `count()` and robust field codes make accessing and processing any issue data a breeze.

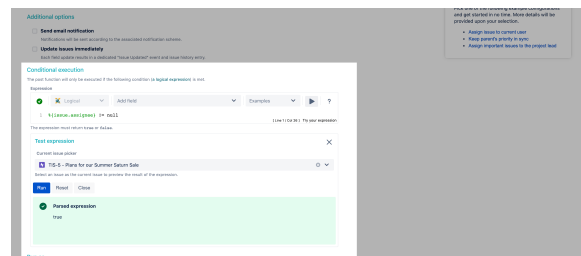
- **Easily access all issue data** - every issue field is just a click away in a dropdown menu.
- **Access even more data** - field codes and parser functions let you retrieve essential data which is not directly accessible through the UI - from historic field values to the number of linked issues.
- **Change happens, be prepared** - the JWT field codes make **fields**, and your expressions, **immune to field name updates**.



All control in a single place - the expression editor

The **JWT expression editor** is your control center for managing JWT expressions. It detects what you want to achieve, from setting values to configuring complex conditional executions, and lets you test your expressions in a central location.

- **Pick the right field** - depending on what you are configuring, JWT injects the right field code at the right time into your expression.
- **Live testing** - validate your expression against any issue and preview the output in real-time.
- **Get help when you need it** - explore all available parser functions, and use the **in-app handbook** to copy and paste or mark them as favorites.
- **Be a parser hero** - use the **auto-complete** function to speed up composing your expressions.



Turn ideas into workflows

JWT for Jira massively extends the native [workflow functionality](#) available in Jira by offering more than **50 custom conditions, validators and post functions**.

- **Control the availability of transitions** - use extremely powerful conditions and validators to enforce a predefined issue state before or while transitioning issues - from matching field values to a maximum number of linked issues.
- **Automate repetitive or manual tasks** - spend less time and increase consistency while creating, transitioning, and updating issues and issue fields with dedicated JWT post functions.
- **Increase flexibility while reducing manual overhead** - meet advanced requirements using **conditional logic** in post functions to only automate certain actions if the timing is right.

Rule-based automation in Jira

[JWT automation rules](#) unleash the real power of the **JWT expression parser**. The number of use cases for automatic recurring tasks are almost endless and so are the capabilities of automation rules.

- **Easy to set up** - setting up an automation rule is straightforward using the **built-in drag and drop visual editor**.
- **Define when and what** - choose from a big set of system **triggers** (e.g. a field is updated by a user), control the scope of the execution using conditions and **selectors** and define which **action** should be performed automatically.
- **Control beyond triggers** - you can **schedule rules** to run at a predefined interval or execute them manually with a single click.
- **Test and deploy** - easily deploy rules between instances with the **built-in export and import** functionality.

Show live data in custom fields

JWT ships with three [custom field types](#) to **calculate field values, display live data**, or even **pull data from online service providers** such as Google.

- **Define the scope** - each custom field type, from number, to text or date-time fields, comes with a different set of options that let you define exactly what you want to see as a result.
- **Use the power of the expression** - the foundation of each field is a JWT parser expression where you can choose from **hundreds of built-in functions**.
- **Make it shine** - you can individually define how the result of the calculation should appear, from **different time formats to currency symbols**.

JWT calendars

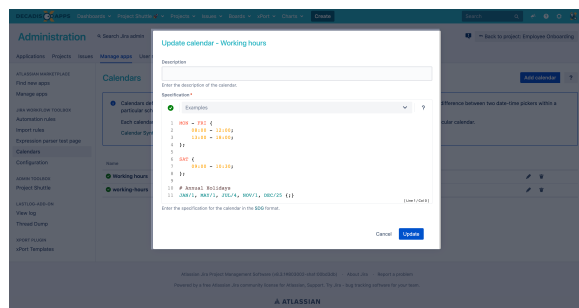
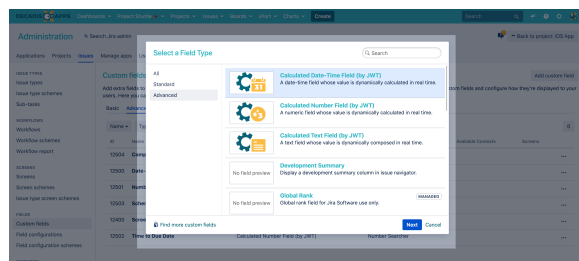
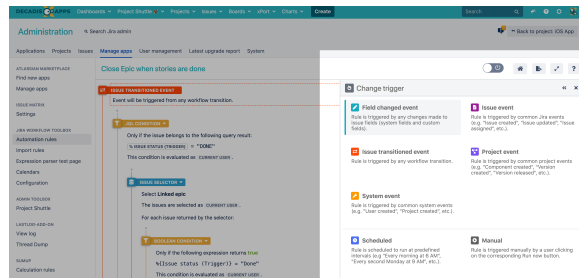
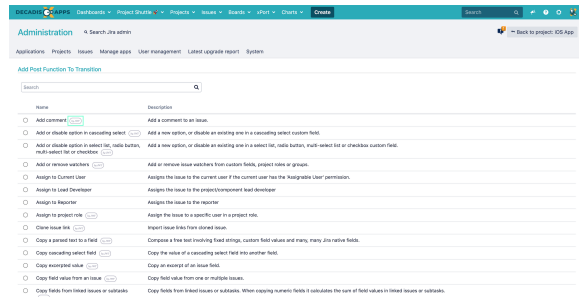
[JWT calendars](#) enable you to configure **highly flexible timeframes** to match your service level agreements, business hours and any other custom schedules relevant to your teams and processes.

- **Global configuration** - configure calendars globally and use them in parser functions for time validations and calculations.
- **Control the execution of actions** - use calendars in workflows and automation rules to control the execution of your automations.
- **Different teams, different data** - use calendars in calculated fields for displaying **context-dependent live data**.

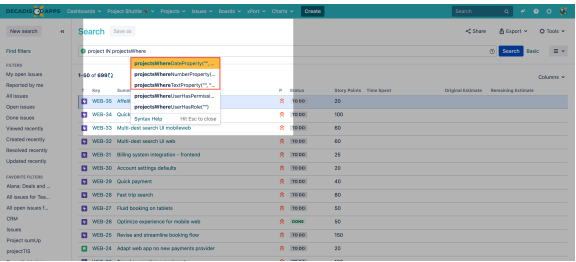
User- & project properties

JWT can utilize information stored as key-value-pairs in [user profiles](#) and [project descriptions](#). These properties can be used for multiple purposes, ranging from controlling transitions to composing project-specific, customized dynamic texts and setting default assignees in project roles.

- **Read and write** - you can both read and manipulate properties through JWT workflow post functions.



- **Accessibility** - you can easily access properties in multiple JWT parser functions.
- **JQL** - JWT ships with **built-in JQL functions** that can be used to query information stored in properties.



ID	Name	Status	Priority
10001	myProjectName	Open	High
10002	myProjectName	Open	High
10003	myProjectName	Open	High
10004	myProjectName	Open	High
10005	myProjectName	Open	High
10006	myProjectName	Open	High
10007	myProjectName	Open	High
10008	myProjectName	Open	High
10009	myProjectName	Open	High
10010	myProjectName	Open	High
10011	myProjectName	Open	High
10012	myProjectName	Open	High
10013	myProjectName	Open	High
10014	myProjectName	Open	High
10015	myProjectName	Open	High
10016	myProjectName	Open	High
10017	myProjectName	Open	High
10018	myProjectName	Open	High
10019	myProjectName	Open	High
10020	myProjectName	Open	High

If you still have questions, feel free to refer to our [support team](#).