

# Get started

## More than just workflows

Jira Workflow Toolbox, or **JWT**, is the **best-rated Jira app** and your all-in-one toolbox for limitless workflow customization, process automation and live data display.

Enjoy an unparalleled user experience while implementing and automating your day-to-day processes - from reporting for the financial department and meeting the most complex governance needs, to simply saving a ton of time and reducing human error through automation - you only need one app, JWT.

Jira Workflow Toolbox, as the name suggests, started as a pure workflow app. Today, it's an all-in-one solution with three main pillars, that you normally have to buy individual apps for:

- **Workflows** - the largest collection of built-in workflow extensions on the market
- **Automation** - a highly flexible, event-based automation engine to break the workflow chains
- **Calculated fields** - three built-in custom field types to calculate and display issue and project data in real-time

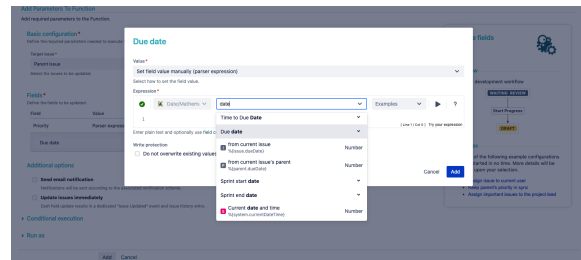
Each feature is built on an easy-to-use user interface that guides the admin through the configuration steps. Built-in examples and an extensive in-app handbook provide the right level of guidance, just when you might need it.

## Highlights

### Expression parser & field codes

JWT ships with a **powerful expression parser** providing hundreds of built-in **parser functions**. Instead of writing and maintaining scripts, use easy to read and well-documented functions like `subtasks()` or `count()` and robust field codes make accessing and processing any issue data a breeze.

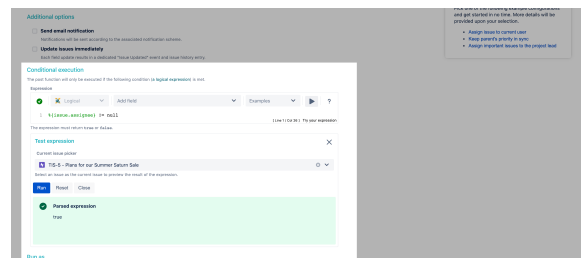
- **Easily access all issue data** - every issue field is just a click in a dropdown menu away.
- **Access even more data** - field codes and parser functions let you retrieve essential data which is not directly accessible through the UI - from historic field values to the number of linked issues.
- **Change happens, be prepared** - the JWT field codes make **fields**, and your expressions, **immune to field name updates**.



### All control in a single place - the expression editor

The **JWT expression editor** is your control center for managing JWT expressions. It detects what you want to achieve, from setting values to configuring complex conditional executions, and lets you test your expressions in a central location.

- **Pick the right field** - depending on what you are configuring, JWT injects the right field code at the right time into your expression.
- **Live testing** - validate your expression against any issue and preview the output in real-time.
- **Get help when you need it** - explore all available parser functions, and use the **in-app handbook** to copy and paste or mark them as favorites.
- **Be a parser hero** - use the **auto-complete** function to speed up composing your expressions.



## Turn ideas into workflows

JWT for Jira massively extends the native [workflow functionality](#) available in Jira by offering more than **50 custom conditions, validators and post functions**.

- **Control the availability of transitions** - use extremely powerful conditions and validators to enforce a predefined issue state before or while transitioning issues - from matching field values to a maximum number of linked issues.
- **Automate repetitive or manual tasks** - spend less time and increase consistency while creating, transitioning, and updating issues and issue fields with dedicated JWT post functions.
- **Increase flexibility while reducing manual overhead** - meet advanced requirements using **conditional logic** in post functions to only automate certain actions if the timing is right.

## Rule-based automation in Jira

[JWT automation rules](#) unleash the real power of the **JWT expression parser**. The number of use cases for automatic recurring tasks are almost endless and so are the capabilities of automation rules.

- **Easy to set up** - setting up an automation rule is straightforward using the **built-in drag and drop visual editor**.
- **Define when and what** - choose from a big set of system **triggers** (e.g. a field is updated by a user), control the scope of the execution using conditions and **selectors** and define which **action** should be performed automatically.
- **Control beyond triggers** - you can **schedule rules** to run at a predefined interval or execute them manually with a single click.
- **Test and deploy** - easily deploy rules between instances with the **built-in export and import** functionality.

## Show live data in custom fields

JWT ships with three [custom field types](#) to **calculate field values, display live data**, or even **pull data from online service providers** such as Google.

- **Define the scope** - each custom field type, from number, to text or date-time fields, comes with a different set of options that let you define exactly what you want to see as a result.
- **Use the power of the expression** - the foundation of each field is a JWT parser expression where you can choose from **hundreds of built-in functions**.
- **Make it shine** - you can individually define how the result of the calculation should appear, from **different time formats to currency symbols**.

## JWT calendars

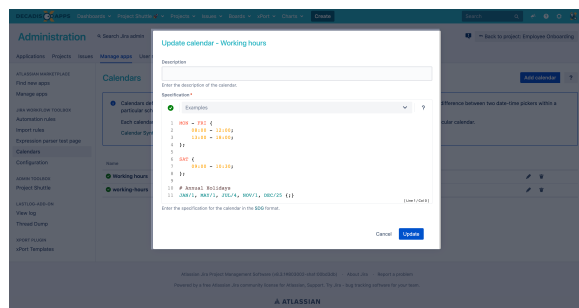
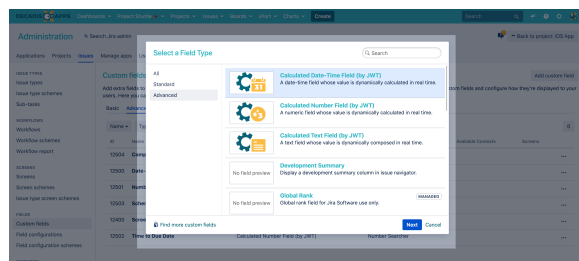
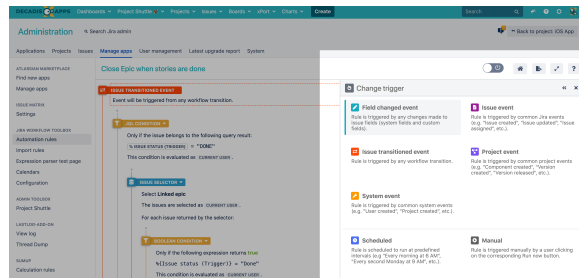
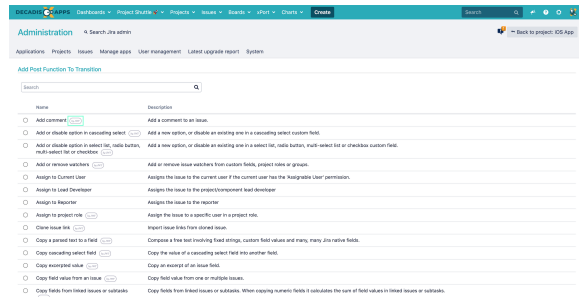
[JWT calendars](#) enable you to configure **highly flexible timeframes** to match your service level agreements, business hours and any other custom schedules relevant to your teams and processes.

- **Global configuration** - configure calendars globally and use them in parser functions for time validations and calculations.
- **Control the execution of actions** - use calendars in workflows and automation rules to control the execution of your automations.
- **Different teams, different data** - use calendars in calculated fields for displaying **context-dependent live data**.

## User- & project properties

JWT can utilize information stored as key-value-pairs in [user profiles](#) and [project descriptions](#). These properties can be used for multiple purposes, ranging from controlling transitions to composing project-specific, customized dynamic texts and setting default assignees in project roles.

- **Read and write** - you can both read and manipulate properties through JWT workflow post functions.



- **Accessibility** - you can easily access properties in multiple JWT parser functions.
- **JQL** - JWT ships with **built-in JQL functions** that can be used to query information stored in properties.

search

Search

Filter items

My open issues

Assigned to me

Open issues

Done Issues

Viewed recently

Created recently

Unlinked recently

Analytics

Alerts, Data and...

All issues for me...

All open issues...

Clear

Issues

Project summary

project123

project123

projectNameContainsProperty

100 of 6992

WEB-01

WEB-02

WEB-03

WEB-04

WEB-05

WEB-06

WEB-07

WEB-08

WEB-09

WEB-10

WEB-11

WEB-12

WEB-13

WEB-14

WEB-15

WEB-16

WEB-17

WEB-18

WEB-19

WEB-20

WEB-21

WEB-22

WEB-23

WEB-24

WEB-25

WEB-26

WEB-27

WEB-28

WEB-29

WEB-30

WEB-31

WEB-32

WEB-33

WEB-34

WEB-35

WEB-36

WEB-37

WEB-38

WEB-39

WEB-40

WEB-41

WEB-42

WEB-43

WEB-44

WEB-45

WEB-46

WEB-47

WEB-48

WEB-49

WEB-50

WEB-51

WEB-52

WEB-53

WEB-54

WEB-55

WEB-56

WEB-57

WEB-58

WEB-59

WEB-60

WEB-61

WEB-62

WEB-63

WEB-64

WEB-65

WEB-66

WEB-67

WEB-68

WEB-69

WEB-70

WEB-71

WEB-72

WEB-73

WEB-74

WEB-75

WEB-76

WEB-77

WEB-78

WEB-79

WEB-80

WEB-81

WEB-82

WEB-83

WEB-84

WEB-85

WEB-86

WEB-87

WEB-88

WEB-89

WEB-90

WEB-91

WEB-92

WEB-93

WEB-94

WEB-95

WEB-96

WEB-97

WEB-98

WEB-99

WEB-100

WEB-101

WEB-102

WEB-103

WEB-104

WEB-105

WEB-106

WEB-107

WEB-108

WEB-109

WEB-110

WEB-111

WEB-112

WEB-113

WEB-114

WEB-115

WEB-116

WEB-117

WEB-118

WEB-119

WEB-120

WEB-121

WEB-122

WEB-123

WEB-124

WEB-125

WEB-126

WEB-127

WEB-128

WEB-129

WEB-130

WEB-131

WEB-132

WEB-133

WEB-134

WEB-135

WEB-136

WEB-137

WEB-138

WEB-139

WEB-140

WEB-141

WEB-142

WEB-143

WEB-144

WEB-145

WEB-146

WEB-147

WEB-148

WEB-149

WEB-150

WEB-151

WEB-152

WEB-153

WEB-154

WEB-155

WEB-156

WEB-157

WEB-158

WEB-159

WEB-160

WEB-161

WEB-162

WEB-163

WEB-164

WEB-165

WEB-166

WEB-167

WEB-168

WEB-169

WEB-170

WEB-171

WEB-172

WEB-173

WEB-174

WEB-175

WEB-176

WEB-177

WEB-178

WEB-179

WEB-180

WEB-181

WEB-182

WEB-183

WEB-184

WEB-185

WEB-186

WEB-187

WEB-188

WEB-189

WEB-190

WEB-191

WEB-192

WEB-193

WEB-194

WEB-195

WEB-196

WEB-197

WEB-198

WEB-199

WEB-200

WEB-201

WEB-202

WEB-203

WEB-204

WEB-205

WEB-206

WEB-207

WEB-208

WEB-209

WEB-210

WEB-211

WEB-212

WEB-213

WEB-214

WEB-215

WEB-216

WEB-217

WEB-218

WEB-219

WEB-220

WEB-221

WEB-222

WEB-223

WEB-224

WEB-225

WEB-226

WEB-227

WEB-228

WEB-229

WEB-230

WEB-231

WEB-232

WEB-233

WEB-234

WEB-235

WEB-236

WEB-237

WEB-238

WEB-239

WEB-240

WEB-241

WEB-242

WEB-243

WEB-244

WEB-245

WEB-246

WEB-247

WEB-248

WEB-249

WEB-250

WEB-251

WEB-252

WEB-253

WEB-254

WEB-255

WEB-256

WEB-257

WEB-258

WEB-259

WEB-260

WEB-261

WEB-262

WEB-263

WEB-264

WEB-265

WEB-266

WEB-267

WEB-268

WEB-269

WEB-270

WEB-271

WEB-272

WEB-273

WEB-274

WEB-275

WEB-276

WEB-277

WEB-278

WEB-279

WEB-280

WEB-281

WEB-282

WEB-283

WEB-284

WEB-285

WEB-286

WEB-287

WEB-288

WEB-289

WEB-290

WEB-291

WEB-292

WEB-293

WEB-294

WEB-295

WEB-296

WEB-297

WEB-298

WEB-299

WEB-300

WEB-301

WEB-302

WEB-303

WEB-304

WEB-305

WEB-306

WEB-307

WEB-308

WEB-309

WEB-310

WEB-311

WEB-312

WEB-313

WEB-314

WEB-315

WEB-316

WEB-317

WEB-318

WEB-319

WEB-320

WEB-321

WEB-322

WEB-323

WEB-324

WEB-325

WEB-326

WEB-327

WEB-328

WEB-329

WEB-330

WEB-331

WEB-332

WEB-333

WEB-334

WEB-335

WEB-336

WEB-337

WEB-338

WEB-339

WEB-340

WEB-341

WEB-342

WEB-343

WEB-344

WEB-345

WEB-346

WEB-347

WEB-348

WEB-349

WEB-350

WEB-351

WEB-352

WEB-353

WEB-354

WEB-355

WEB-356

WEB-357

WEB-358

WEB-359

WEB-360

WEB-361

WEB-362

WEB-363

WEB-364

WEB-365

WEB-366

WEB-367

WEB-368

WEB-369

WEB-370

WEB-371

WEB-372

WEB-373

WEB-374

WEB-375

WEB-376

WEB-377

WEB-378

WEB-379

WEB-380

WEB-381

WEB-382

WEB-383

WEB-384

WEB-385

WEB-386

WEB-387

WEB-388

WEB-389

WEB-390

WEB-391

WEB-392

WEB-393

WEB-394

WEB-395

WEB-396

WEB-397

WEB-398

WEB-399

WEB-400

WEB-401

WEB-402

WEB-403

WEB-404

WEB-405

WEB-406

WEB-407

WEB-408

WEB-409

WEB-410

WEB-411

WEB-412

WEB-413

WEB-414

WEB-415

WEB-416

WEB-417

WEB-418

WEB-419

WEB-420

WEB-421

WEB-422

WEB-423

WEB-424

WEB-425

WEB-426

WEB-427

WEB-428

WEB-429

WEB-430

WEB-431

WEB-432

WEB-433

WEB-434

WEB-435

WEB-436

WEB-437

WEB-438

WEB-439

WEB-440

WEB-441

WEB-442

WEB-443

WEB-444

WEB-445

WEB-446

WEB-447

WEB-448

WEB-449

WEB-450

WEB-451

WEB-452

WEB-453

WEB-454

WEB-455

WEB-456

WEB-457

WEB-458

WEB-459

WEB-460

WEB-461

WEB-462

WEB-463

WEB-464

WEB-465

WEB-466

WEB-467

WEB-468

WEB-469

WEB-470

WEB-471

WEB-472

WEB-473

WEB-474

WEB-475

WEB-476

WEB-477

WEB-478

WEB-479

WEB-480

WEB-481

WEB-482

WEB-483

WEB-484

WEB-485

WEB-486

WEB-487

WEB-488

WEB-489

WEB-490

WEB-491

WEB-492

WEB-493

WEB-494

WEB-495

WEB-496

WEB-497

WEB-498

WEB-499

WEB-500

WEB-501

WEB-502

WEB-503

WEB-504

WEB-505

WEB-506

WEB-507

WEB-508

WEB-509

WEB-510

WEB-511

WEB-512

WEB-513

WEB-514

WEB-515

WEB-516

WEB-517

WEB-518

WEB-519

WEB-520

WEB-521

WEB-522

WEB-523

WEB-524

WEB-525

WEB-526

WEB-527

WEB-528

WEB-529

WEB-530

WEB-531

WEB-532

WEB-533

WEB-534

WEB-535

WEB-536

WEB-537

WEB-538

WEB-539

WEB-540

WEB-541

WEB-542

WEB-543

WEB-544

WEB-545

WEB-546

WEB-547

WEB-548

WEB-549

WEB-550

WEB-551

WEB-552

WEB-553

WEB-554

WEB-555

WEB-556

WEB-557

WEB-558

WEB-559

WEB-560

WEB-561

WEB-562

WEB-563

WEB-564

WEB-565

WEB-566

WEB-567

WEB-568

WEB-569

WEB-570

WEB-571

WEB-572

WEB-573

WEB-574

WEB-575

WEB-576

WEB-577

WEB-578

WEB-579

WEB-580

WEB-581

WEB-582

WEB-583

WEB-584

WEB-585

WEB-586

WEB-587

WEB-588

WEB-589

WEB-590

WEB-591

WEB-592

WEB-593

WEB-594

WEB-595

WEB-596

WEB-597

WEB-598

WEB-599

WEB-600

WEB-601

WEB-602

WEB-603

WEB-604

WEB-605

WEB-606

WEB-607

WEB-608

WEB-609

WEB-610

WEB-611

WEB-612

WEB-613

WEB-614

WEB-615

WEB-616

WEB-617

WEB-618

WEB-619

WEB-620

WEB-621

WEB-622

WEB-623

WEB-624

WEB-625

WEB-626

WEB-627

WEB-628

WEB-629

WEB-630

WEB-631

WEB-632

WEB-633

WEB-634

WEB-635

WEB-636

WEB-637

WEB-638

WEB-639

WEB-640

WEB-641

WEB-642

WEB-643

WEB-644

WEB-645

WEB-646

WEB-647

WEB-648

WEB-649

WEB-650

WEB-651

WEB-652

WEB-653

WEB-654

WEB-655

WEB-656

WEB-657

WEB-658

WEB-659

WEB-660

WEB-661

WEB-662

WEB-663

WEB-664

WEB-665

WEB-666

WEB-667

WEB-668

WEB-669

WEB-670

WEB-671

WEB-672

WEB-673

WEB-674

WEB-675

WEB-676

WEB-677

WEB-678

WEB-679

WEB-680

WEB-681

WEB-682

WEB-683

WEB-684

WEB-685

WEB-686

WEB-687

WEB-688

WEB-689

WEB-690

WEB-691

WEB-692

WEB-693

WEB-694

WEB-695

WEB-696

WEB-697

WEB-698

WEB-699

WEB-700

WEB-701

WEB-702

WEB-703

WEB-704

WEB-705

WEB-706

WEB-707

WEB-708

WEB-709

WEB-710

WEB-711

WEB-712

WEB-713

WEB-714

WEB-715

WEB-716

WEB-717

WEB-718

WEB-719

WEB-720

WEB-721

WEB-722

WEB-723

WEB-724

WEB-725

WEB-726

WEB-727

WEB-728

WEB-729

WEB-730

WEB-731

WEB-732

WEB-733

WEB-734

WEB-735

WEB-736

WEB-737

WEB-738

WEB-739

WEB-740

WEB-741

WEB-742

WEB-743

WEB-744

WEB-745

WEB-746

WEB-747

WEB-748

WEB-749

WEB-750

WEB-751

WEB-752

WEB-753

WEB-754

WEB-755

WEB-756

WEB-757

WEB-758

WEB-759

WEB-760

WEB-761

WEB-762

WEB-763

WEB-764

WEB-765

WEB-766

WEB-767

WEB-768

WEB-769

WEB-770

WEB-771

WEB-772

WEB-773

WEB-774

WEB-775

WEB-776

WEB-777

WEB-778

WEB-779

WEB-780

WEB-781

WEB-782

WEB-783

WEB-784

WEB-785

WEB-786

WEB-787

WEB-788

WEB-789

WEB-790

WEB-791

WEB-792

WEB-793

WEB-794

WEB-795

WEB-796

WEB-797

WEB-798

WEB-799

WEB-800

WEB-801

WEB-802

WEB-803

WEB-804

WEB-805

WEB-806

WEB-807

WEB-808

WEB-809

WEB-810

WEB-811

WEB-812

WEB-813

WEB-814

WEB-815

WEB-816

WEB-817

WEB-818

WEB-819

WEB-820

WEB-821

WEB-822

WEB-823

WEB-824

WEB-825

WEB-826

WEB-827

WEB-828

WEB-829

WEB-830

WEB-831

WEB-832

WEB-833

WEB-834

WEB-835

WEB-836

WEB-837

WEB-838

WEB-839

WEB-840

WEB-841

WEB-842

WEB-843

WEB-844

WEB-845

WEB-846

WEB-847

WEB-848

WEB-849

WEB-850

WEB-851

WEB-852

WEB-853

WEB-854

WEB-855

WEB-856

WEB-857

WEB-858

WEB-859

WEB-860

WEB-861

WEB-862

WEB-863

WEB-864

WEB-865

WEB-866

WEB-867

WEB-868

WEB-869

WEB-870

WEB-871

WEB-872

WEB-873

WEB-874

WEB-875

WEB-876

WEB-877

WEB-878

WEB-879

WEB-880

WEB-881

WEB-882

WEB-883

WEB-884

WEB-885

WEB-886

WEB-887

WEB-888

WEB-889

WEB-890

WEB-891

WEB-892

WEB-893

WEB-894

WEB-895

WEB-896

WEB-897

WEB-898

WEB-899

WEB-900

WEB-901

WEB-902

WEB-903

WEB-904

WEB-905

WEB-906

WEB-907

WEB-908

WEB-909

WEB-910

WEB-911

WEB-912

WEB-913

WEB-914

WEB-915

WEB-916

WEB-917

WEB-918

WEB-919

WEB-920

WEB-921

WEB-922

WEB-923

WEB-924

WEB-925

WEB-926

WEB-927

WEB-928

WEB-929

WEB-930

WEB-931

WEB-932

WEB-933

WEB-934

WEB-935

WEB-936

WEB-937

WEB-938

WEB-939

WEB-940

WEB-941

WEB-942

WEB-943

WEB-944

WEB-945

WEB-946

WEB-947

WEB-948

WEB-949

WEB-950

WEB-951

WEB-952

WEB-953

WEB-954

WEB-955

WEB-956

WEB-957

WEB-958

WEB-959

WEB-960

WEB-961

WEB-962

WEB-963

WEB-964

WEB-965

WEB-966

WEB-967

WEB-968

WEB-969

WEB-970

WEB-971

WEB-972

WEB-973

WEB-974

WEB-975

WEB-976

WEB-977

WEB-978

WEB-979

WEB-980

WEB-981

WEB-982

WEB-983

WEB-984

WEB-985

WEB-986

WEB-987

WEB-988

WEB-989

WEB-990

WEB-991

WEB-992

WEB-993

WEB-994

WEB-995

WEB-996

WEB-997

WEB-998

WEB-999

WEB-1000

Columns

Original Estimates

Remaining Estimates

If you still have questions, feel free to refer to our [support team](#).